



# DC PUMPS BP 3000 - BP 3000 INLINE

**EN.** Fuel vane pumps.  
Powerful, dependable and economical, they are available with 12 and 24-volt direct current motors.  
Thanks to their compact sizes, these pumps are used as the primary system in earthmoving machinery.

**RU.** Крыльчатые насосы для перекачивания. Мощные, доступные и экономичные, они предлагаются с двигателями постоянного тока 12 и 24 вольт.

Благодаря компактному размеру, эти насосы можно использовать в качестве основного оборудования на машинах для земляных работ.

**DE.** Flügelzellen-Umfüllpumpen. Leistungsstark, zuverlässig, wirtschaftlich und mit 12- und 24 Volt Gleichstrommotor.

Dank der kompakten Bauweise lassen sich diese Pumpen als Erstanlage bei Erdbewegungsmaschinen einsetzen.

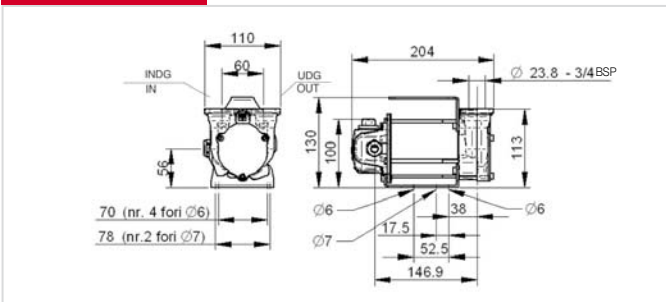
## PERFORMANCE

- Vane pump with rotor.
- By-pass valve incorporated into the pump body.
- Duty cycle 30 min.
- Flow rate up to 50 l/min
- Noise level below 70 dB
- 12 - 24 V DC operation

- Крыльчатый насос с ротором.
- Обводной клапан, встроенный в корпус насоса.
- Рабочий цикл 30 мин.
- Расход до 50 л/мин
- Уровень шума ниже 70 дБ
- Функционирование от источника постоянного тока 12 - 24 В

- Flügelzellenpumpe mit Rotor.
- Im Pumpenkörper eingebautes Bypass-Ventil.
- Arbeitszyklus 30 Min.
- Durchflussmenge bis 50 l/Min.
- Kleinster Lärmpegel 70 dB
- Stromversorgung 12 - 24 V DC

## DIMENSIONS



## GUARANTEE



**Guaranteed IP55 protection**  
Prevents water and dust entering the motor.

**EMC Test**  
No interference with power circuits.

**Vibration Test**  
Able to resist high vibrations.

## PRODUCTS' RANGE WEIGHT AND PACKAGING

Code	Weight		Packaging		
	kg	lbs	mm	inch	pcs/box
<b>F00342000</b>	3,5	7,9	200x120x140	7,9x4,7x5,5	1
<b>F00347000</b>	3,5	7,9	200x120x140	7,9x4,7x5,5	1
<b>F00357500</b>	3,5	7,9	200x120x140	7,9x4,7x5,5	1
<b>F00358500</b>	3,5	7,9	200x120x140	7,9x4,7x5,5	1



**REGISTERED  
DESIGN**

Flow-rate

up to  
**50** l/min  
(up to 13 gpm)



**PIUSI**<sup>®</sup>

DISPENSERS

PUMPS

METERS

NOZZLE METERS

NOZZLE

SPECIAL EQUIPMENTS

FLUID MONITORING

ACCESSORIES

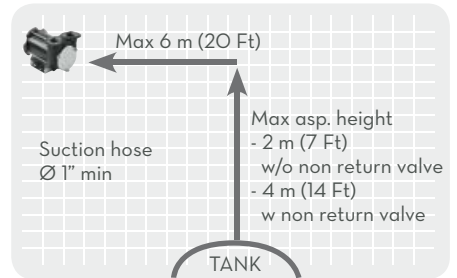
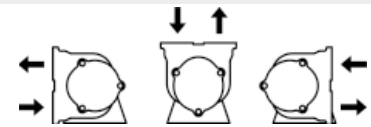
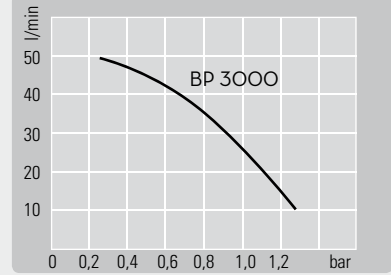
FILTERING



BP 3000 - PORTS NOT THREADED



BP 3000 INLINE - THREADED PORTS



ON REQUEST

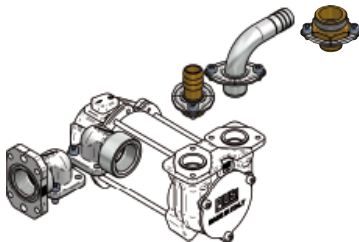


- KIT terminal box + 2mt cable + fuse 25A with clamp BP3000 12V - Code F16293000
- KIT terminal box + 4mt cable + fuse 25A with clamp BP3000 12V - Code F16295000
- KIT terminal box + 2mt cable + fuse 15A with clamp BP3000 24V - Code F16294000
- KIT terminal box + 4mt cable + fuse 15A with clamp BP3000 24V - Code F16296000



Terminal box  
Code F1601100A

BP 3000 VERTICAL PORTS ONLY



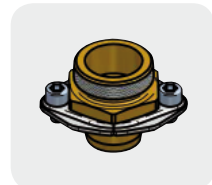
Kit straight hose tail 3/4":  
Code F16172000  
(No.02 pcs)  
1": Code F17124000  
(No.02 pcs)



90° hose tail  
3/4": Code F16173000  
(No.01 pcs)  
1": Code F17262000  
(No.01 pcs)



Flanged elbow  
Code F16178000  
(No.01 pcs)  
Elbow  
Code F16770000  
(No.01 pcs)



Flanged adaptor  
(No.01 pcs)  
1" BSP F: F16799000  
3/4" BSP F: F17314000  
1" BSP M: F17313000

PRODUCTS' RANGE TECHNICAL DATA

Code	Description	Fluids type	Flow-rate		Voltage			rpm	Duty cycle min.	Max working pressure bar.
			l/min	gpm	DC Volt	Power Watt	Amp. max.			
F00342000	BP3000 12V	D	50	13	12	300	24	2900	30	1,5
F00347000	BP3000 24V / 12V	D	50/30	13/6	24/12	310/80	13/6,5	2900/1500	30	1,5
F00357500	BP3000 INLINE 12V	D	50	13	12	300	24	2900	30	1,5
F00358500	BP3000 INLINE 24V / 12V	D	50/30	13/6	24/12	310/80	13/6,5	2900/1500	30	1,5